

FLIR ThermoVision Scout™

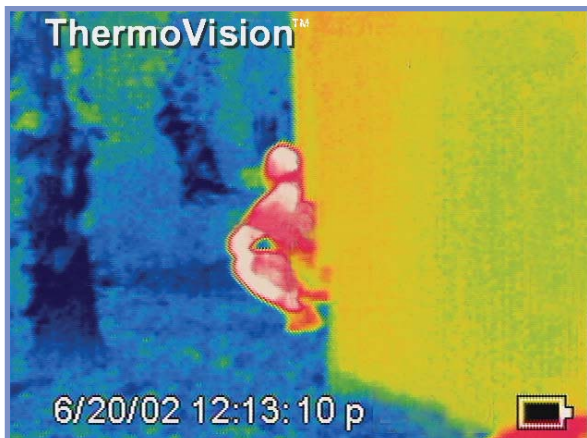
Infrared Camera

The ThermoVision® Scout™ is the latest in infrared camera technology offering superior tracking capabilities for a wide variety of law enforcement applications. It is as easy to handle as a flashlight! Handheld, lightweight, rugged and easy to use, the ThermoVision® Scout™ is ideal for search and rescue, patrol or SWAT operations. This new infrared camera allows officers to see suspects or victims clearly in complete darkness or smoke, through foliage and in other hard to see situations, from up to 1200 feet away. ThermoVision® Scout™ incorporates true infrared detector technology that offers substantial detection capabilities above and beyond the “low level light” technology currently on the market. Built to improve officer safety, the vivid 2.5" color LCD allows officers to peer around corners or look into attics without exposing themselves to the line of fire. In fact, the Scout is so subtle, suspects won't even know they're being tracked. No other camera can compare to the state-of-the-art features of the Scout.

InstAlert™

The Scout's exclusive InstAlert features highlights warm objects, such as people or vehicles, in red for immediate operator attention. The background of the image remains in black and white for detailed scene analysis. The InstAlert's powerful auto contrast algorithm instantly optimizes image contrast for maximum target definition and tracking capability.

Targets may be detected quickly, day or night, from up to 1200 feet away. Rugged, lightweight and weather-resistant, you can hold the Scout in your hand, clip it onto your belt, or place it in your vest or vehicle. At just 1.5 lbs, the Scout can travel with you anywhere and everywhere.



DTC COMMUNICATIONS, INC

486 Amherst Street ▲ Nashua, NH 03063 ▲ www.dtccom.com ▲ info@dtccom.com ▲ Call to order: 1-800-233-8639

FLIR ThermoVision Scout™

Scout: Detect, Apprehend, Be Safe!

Using the Scout, simply point and scan an area for instant infrared images that show warmer areas. Set the Scout to detect human temperature ranges, and let the InstAlert feature identify people in red. Faster and more accurate detection of targets makes them easier and safer to track.

The vivid LCD display allows you to adjust brightness and eliminates unsafe viewing through an eyepiece. You can now peer around a corner, above a drop ceiling, or under a car without exposing your head or torso. It also preserves your night vision.

The Scout has an optional image storage feature, storing up to 100 images in JPEG format. You can then download stored images quickly to your PC with ThermoCAM® Connect software. An optional wireless transmitter is available, enabling your cover team to see what you're seeing in real time.

Scout Features

- ▲ Advanced IR detection technology
- ▲ Ultra-compact, lightweight and durable
- ▲ Use like a flashlight
- ▲ 2.5" color LCD display
- ▲ Lightweight, less than 1.5 lbs with battery
- ▲ Avoids having the operator look through an eyepiece
 - See around corners without exposing body/head
 - Maintains night vision of operator
- ▲ Optional Heads Up Display
- ▲ InstAlert features identifies warm objects in color
 - Faster and more accurate detection of humans
 - Identifies people vs. other warmer objects
- ▲ Easy to use
- ▲ Minimizes training requirements
- ▲ Wireless video option
 - Enables cover teams to view camera remotely

Models

- ▲ Thermovision Scout-12, with 12° lens, (standard)
- ▲ Thermovision Scout-25, with 25° lens, (optional)
- ▲ Thermovision Scout-45, with 45° lens (optional)

Add "-S" to above models for optional JPEG storage

Options

- ▲ Battery charger P/N 1195102
- ▲ Spare Battery P/N 1195106
- ▲ 12 Degree Lens P/N 1195272
- ▲ 25 Degree Lens P/N 1195271
- ▲ 45 Degree Lens P/N 1195273



Specifications

Field of view	12° X 9° (25° or 45° available)
Thermal sensitivity	0.12°C
Detector type	Focal plane array (FPA) uncooled microbolometer
Spectral range	7.5 to 13 µm
Display	2.5" color LCD, 16K colors
Video Output	NTSC, standard RCA composite video
Image Controls	Palettes (Iron, Rainbow, B/W, B/W inv), Level, Span, Auto adjust (continuous/manual) Date/time, Language (English, Spanish), Info, LCD
Set-up controls	Image Intensity (high/normal/low)
Temperature range	-20°C to +250°C (-4°F to +482°F)
Battery type	Li-Ion
Battery operating time	1.5 hours. Display shows battery status
Battery charging	In camera, AC adapter or 12V from car with 12V cable. 2 bay intelligent charger.
AC Operation	AC adapter, 90-260VAC, 50/60Hz/12VDC out
Voltage	11-16 VDC
Power saving	Automatic shutdown and sleep mode (user-selectable)
Weight	< 1.5 lbs. (0.7 kg) including battery
Dimensions	10.4" L x 3.2" W x 4.1" D (265mm x 80mm x 105mm)
Color	Black
Tripod Mounting	Standard, 1/4" - 20
Cover Case	Plastic and rubber
INTERFACES	
USB	Interface USB
RS 232 cable (optional)	RS232
Digital storage functions	Freeze, Standard JPEG images, Delete all images, Delete image, Open
Image storage capacity	100 JPEG Images

Intended for: **State, Local, Federal** use



DTC COMMUNICATIONS, INC

486 Amherst Street ▲ Nashua, NH 03063 ▲ www.dtccom.com ▲ info@dtccom.com ▲ Call to order: 1-800-233-8639