

FLIR ThermoVision Scout™ ZX

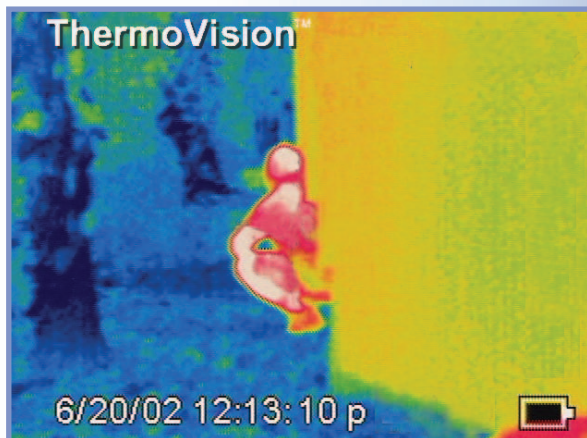
Infrared Camera

This is the new ThermoVision® SCOUT® ZX infrared camera from DTC. The SCOUT® ZX includes all of the great features from the original SCOUT and adds a high resolution imager and display, plus the ability to quickly download up to 100 JPEG images to your computer. A 25° lens comes standard, and you can operate the digital 2X and 4X zoom with the touch of a button.

The Scout ZX provides the ability to see in total darkness, using the heat radiated from humans and objects. The Scout ZX has been designed specifically for law enforcement and security applications. Its 2.5" LCD monitor enables you to look around corners without exposing your body, increasing officer safety.

A new, high-resolution 320 x 240 pixel display is featured with a focal plane array uncooled microbolometer. The image on the monitor automatically adjusts to an upright position regardless of how you hold the camera. At 1.5 lbs, you can carry the Scout ZX anywhere.

The Scout ZX is easy to use. Buttons on the top panel control most settings. A built-in menu system provides easy access to more advanced functions, including FLIR's unique InstAlert® feature. InstAlert "tags" user-selected temperatures in red, enabling the camera operator to immediately identify them against a monochrome background. The Scout ZX features a removable lens, with additional lens options available. ThermoCAM® QuickView software is included, which supports easy export of captured images in standard JPG format.



ACTUAL
SIZE

InstAlert™

The Scout's ZX exclusive InstAlert features highlights warm objects, such as people or vehicles, in red for immediate operator attention. The background of the image remains in black and white for detailed scene analysis. The InstAlert's powerful auto contrast algorithm instantly optimizes image contrast for maximum target definition and tracking capability.

Targets may be detected quickly, day or night, from up to 1200 feet away. Rugged, lightweight and weather-resistant, you can hold the Scout in your hand, clip it onto your belt, or place it in your vest or vehicle. At just 1.5 lbs, the Scout ZX can travel with you anywhere and everywhere.

Scout ZX Features

- ▲ Advanced IR detection technology
- ▲ Ultra-compact, lightweight and durable
- ▲ Use like a flashlight
- ▲ 2.5" color LCD display
- ▲ Lightweight, less than 1.5 lbs with battery
- ▲ Avoids having the operator look through an eyepiece
 - See around corners without exposing body/head
 - Maintains night vision of operator
- ▲ Optional Heads Up Display
- ▲ InstAlert features identifies warm objects in color
 - Faster and more accurate detection of humans
 - Identifies people vs. other warmer objects
- ▲ Easy to use
- ▲ Store up to 100 jpeg images
- ▲ Minimizes training requirements
- ▲ Wireless video option
 - Enables cover teams to view camera remotely
- ▲ 2x plus 4x zoom

Models

- ▲ Thermovision Scout ZX, with 25° lens, (standard) or specify 15 or 45 degree lens

Options

- ▲ Battery charger P/N 8002078
- ▲ Spare Battery P/N 8002077
- ▲ 15 Degree Lens P/N 8002160
- ▲ 45 Degree Lens P/N 8002159
- ▲ 25 Degree Lens P/N 8720492



Specifications

Field of view	2 x Telescope 25° X 19° / 0.3m
Thermal sensitivity	0.08° C at 25° C
Image frequency	25 Hz non-interlaced
Digital Zoom	1 x, 2 x or 4 x
Spectral range	7.5 to 13 µm
Temperature range	-20° C to +250° C
Display	2.5" color LCD, 16K colors
Video output	PAL or NTSC, standard RCA composite video
Type Built-in	FLASH memory (>100 images)
File formats	Standard JPEG
Lenses (optional)	0.5 Wide angle 45° x 36° / 0.2m
BatteryType	Li-Ion, rechargeable, field replaceable
Operating Time	2 hours continuous operation
AC operation AC adapter	90-260 V AC, 50/60 Hz, 12 V DC out
Voltage	11-16 V DC
Operating temp range	-15° C to +45° C
Storage temp range	-40° C to +70° C
Humidity	Operating and storage 20% to 80%, non-condensing, IEC 359
Encapsulation	IP54
Shock Operational:	25G, IEC 68-2-29
Vibration Operational:	2G, IEC 68-2-6
Weight	< 800 g, incl. battery (with 25° lens)
Size	272 mm x 80 mm x 105 mm
Interfaces	
USB	Image transfer to PC
RS-232 cable (optional)	Image transfer to PC
Video output	Standard RCA composite video

